



Zyxel WiFi 6 gateways and extenders will support OpenSync 2.2 and will be Plume-certified to support Plume's HomePass® Smart Home Suite, Haystack™ Data Prediction and Analytics Suite.

Zyxel's WiFi 6 gateway-extender system supports dual-operational capability giving service providers unprecedented versatility in network management and delivery of enhanced WiFi. The ability to choose between Zyxel's MPro MESH Intelligent WiFi with TR-69 remote management and Plume's integrated platform provides maximum deployment flexibility and allows for different service options for a tiered approach.

Compatible Models

EX3510
Dual-Band Wireless AX5700 Gigabit Ethernet Gateway

EX5510
2.5G Dual-Band Wireless AX6000 Gigabit Ethernet Gateway

WX3310
Dual-Band Wireless AX5400 Gigabit Extender

Rate

AX5700

AX6000

AX5400

Antenna

**2.4G - 3x3
5G - 4x4**

**2.4G - 4x4
5G - 4x4**

**2.4G - 2x2
5G - 4x4**

High-Power

Yes

Yes

Yes

WAN

1GE

2.5GE

N/A

LAN

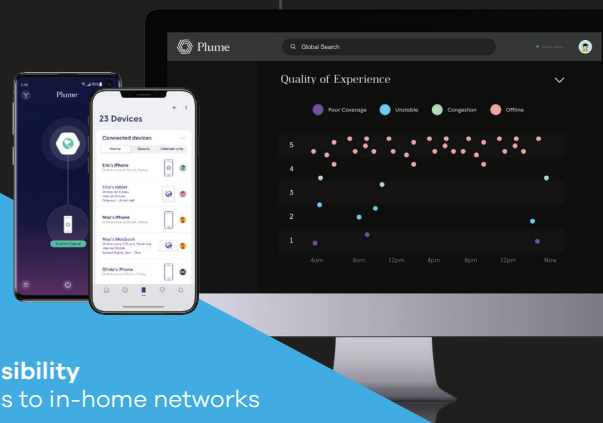
4 x 1GE

4 x 1GE

2 x 1GE

Why Plume?

Plume has created a Consumer Experience Management (CEM) Platform, powered by OpenSync™, which enables the curation and delivery of new Smart Home Services rapidly and at scale.



Plume Benefits



Connectivity
Coverage and speed



Transparency
Clear network topology for the support team



Safety
Enhanced security and privacy measures



Personalization
Customers monitor their entire network with the HomePass app



Real-time Visibility
Direct access to in-home networks



Customer Satisfaction
New services are continuously delivered via the Plume Cloud and powered by OpenSync



Evolution
Continuous improvement on cloud-deployed software



Insight
Bring your existing data to life with analytic tools

HomePass Suite

Best-in-class Smart Home Services

HomePass is a comprehensive Smart Home Services suite controlled by a top-rated HomePass mobile app, a complete smart home command center.

Homepass App

- Customizable from logo and contact information to feature availability, privacy, and support
- Intuitive self-install feature with a >97% success rate (eliminating truck rolls)
- Network hardware is discovered over Bluetooth so the system is up and running in minutes
- Advanced, automatic identification of devices in the home – complete with icons and names – gives subscribers immediate visibility into their home network
- Visual topology representation of all access points and connected devices available in multiple languages



Haystack Suite

Superior Subscriber Experience Management

Haystack is a set of applications that allows service providers to truly see their networks for the first time. Plume's software also helps elevate personalization and performance over basic connectivity to meet the needs of ever-evolving smart homes.

Frontline

A comprehensive set of tools and dashboards designed for network ops and tech personnel such as instant network health checks with remediation steps for quick first-time call resolution and expanded topology of device connectivity with Plume's "Time Machine" scrubber.

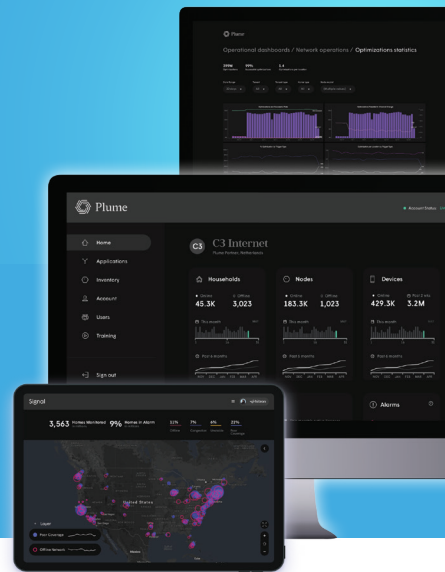
Panorama

Intuitive, in-home visibility to drastically cut down on truck rolls:

- Real-time network troubleshooting and diagnosis
- Debug issues instantly
- Track customer growth and analyze trends
- Aid in customer lifecycle management integration

Signal

AI-powered proactive monitoring and autonomous resolution tool that alerts and resolves consumer pain points inside smart homes. Uses "Proactive Alerting" to identify issues that need attention and inform subscribers of any upcoming outages.



Contact us at broadband@zyxel.com for more information

